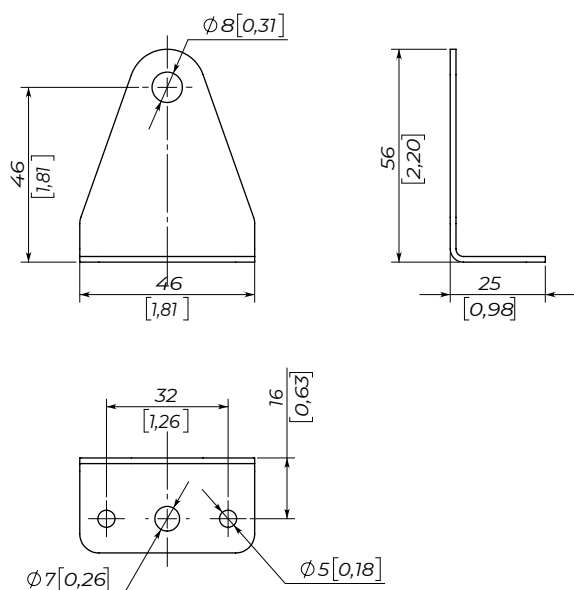


## FLOOR-Bracket

### Floor mounting bracket

FLOOR-Bracket is a compact, angular, strong, and reliable wall bracket, which is made of steel and has a powder coating, which ensures reliable fastening to the floor of the loudspeaker.

#### DIMENSIONS



#### SPECIFICATIONS

Functions	floor mounting bracket
Compatibility	HAMMER-12, DBA-12, DBA-15, DBA-18, DBA-21
Load limit	60 kg / 132 lbs
Design factor	7:1 ratio
Dimension (W × H × D)	46 × 56 × 25 mm / 1.81" × 2.20" × 0.98"
Net weight (4 pcs)	0.12 kg / 0.26 lbs



#### SAFETY INSTRUCTIONS

1. Keep liquids, direct sunlight, open flames, and heat sources away from the speaker system to prevent damage or failure.
2. Avoid using the system with damaged connectors or cables to prevent electrical shock or fire hazards.
3. Ensure the speaker is securely positioned on a stable surface (floor, stage, or wall).
4. On angled or slippery surfaces, secure the system to prevent movement caused by vibration.
5. Limit exposure to sound levels above 90 dB to prevent potential hearing damage.
6. Use a high-pass filter (HPF) to eliminate low, non-audible frequencies and avoid speaker damage and sound distortion.
7. Do not exceed the input power ratings specified to ensure safe and reliable operation of the speaker system.